

CAVIUS

PHOTOELECTRIC SMOKE ALARM

THE WORLD'S SMALLEST



10 YEAR
BATTERY
INCLUDED
NON-REPLACEABLE

PLEASE READ THIS USER GUIDE CAREFULLY

CAVIUS

CAVIUS Photoelectric Smoke Alarm

Part Code: 2008-003/10014/10020/10028

Model: 2008-001

Recess Kit Part Code: 11010

**PLEASE READ THE USER
GUIDE CAREFULLY BEFORE
INSTALLATION AND RETAIN
FOR FUTURE USE.**

For large text option and maintenance guide visit

cavius.co.nz/resources

cavius.com.au/resources

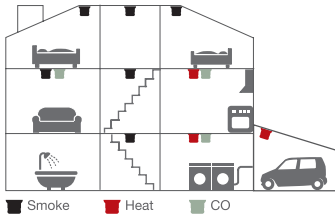


The best locations in your home to install the smoke alarm:

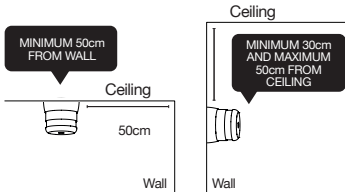
- Place a smoke alarm between possible fire sources and bedrooms as a minimum.
- Smoke alarms on each floor, in hallways and stairways.
- Smoke alarms in each room such as bedrooms and living rooms.

Additional alarms will increase the safety.

The NZ and Australian Fire Services recommend smoke alarms in every bedroom, hallway and living area for early fire detection.



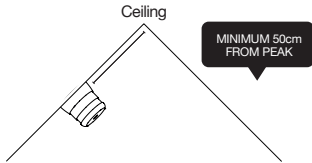
Placement: Designed for placement on ceiling (preferred) or wall. The smoke alarm should be a minimum 50cm from the wall, with a minimum of one smoke alarm per floor and a maximum distance between smoke alarms of 10 metres.



4.

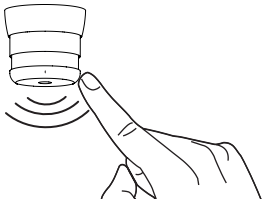
For cathedral or peak ceiling:

For cathedral or peak ceiling; a minimum of 50cm from the peak.



5.

2. After mounting, allow 5 seconds for the alarm to power up and then test the smoke alarm by pushing the test button (which is the entire bottom of the alarm). The alarm should produce a loud sound.



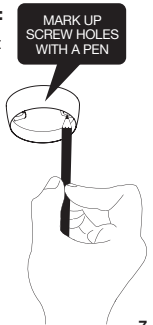
6.

Installation of smoke alarm:

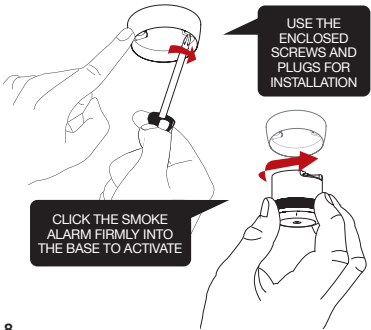
Info: The label on the product must not be removed due to important information.

Option 1 – Standard base

1. Use the mounting base ring to mark the screw holes on the ceiling.



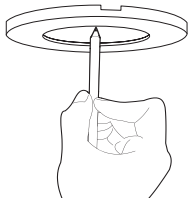
7.



8.

Option 2 – Recess Kit

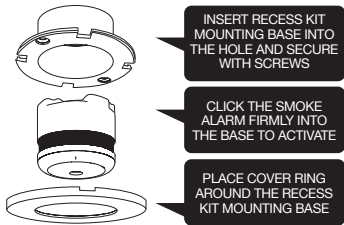
1. Place the Cover Ring on the area where you wish to install the smoke alarm, trace around the inside of the ring.



**HOLE SAW
DRILL REQUIRED.**
44mm - 48mm

9.

2. Using your hole saw (44mm-48mm), cut a hole into the surface. **CAUTION:** Ensure there is no wiring or any electrical equipment behind the surface you are drilling your hole into.



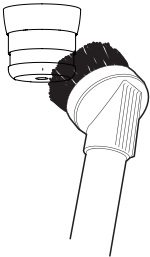
The smoke alarm may NOT be placed:

- In dusty rooms.
- At the top of high pointed ceilings, instead place a minimum of 50cm to a maximum of 150cm from the apex.
- Within 50cm of a wall.
- In rooms where the temperature goes outside +5° to 45°C or above 90% relative humidity non condensing.
- In kitchens, garages, or too close to fireplaces. In areas that get damp or where gases may occur.

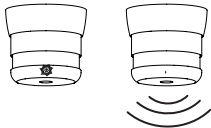
Place the smoke alarm where it is reachable in order to test the battery and complete maintenance.

Maintenance: The smoke alarm should be vacuum cleaned once per quarter, and can be wiped with a slightly damp cloth (do not open the alarm).

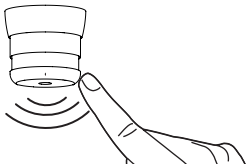
Test the smoke alarm once per month by pushing the test button. The smoke alarm should produce a loud alarm tone.



Smoke alarm signal: The smoke alarms have a visual and acoustic signal. In the passive state, the LED will flash every 48 seconds to indicate normal function. In alarming state the LED will flash and the alarm will emit a sweeping sound pattern designed to alert occupants.



Hush function: In case of unintentional or false alarms, press and hold the hush button for 2 seconds (which is the entire bottom of the alarm). This will mute the alarm for 10 minutes, after which time the alarm will automatically resume its normal function.



FUNCTIONAL INFORMATION

Type of alarm: CAVIUS smoke alarm is a photoelectric smoke alarm.

Alarm signal: Fire alarm activation is indicated by a series of repeated tones. The minimum sound level is 85 dB at 3 metres.

Battery: Powered by a non-replaceable CR123A 3V, 1600mAh with 10-year life (included).



10 YEAR
BATTERY
INCLUDED
NON-REPLACEABLE

Low battery indicator: A short acoustic “beep” will sound and the LED will flash every 48 seconds when the battery is near the end of its life. In this stage it will continue for a minimum of 30 days.

Please replace smoke alarm: You must change the smoke alarm after 10 years of use, or if the smoke alarm has suffered any damage. The smoke alarm is not active unless it is clicked into the mounting base.

Always test the smoke alarm after clicking into the mounting base, allow 5 seconds before testing.

Fault finding: If the smoke alarm activates without a visible smoke or fire presence, then possible causes could be:

- Dust particles which have entered the smoke chamber, these can be removed by vacuuming around the mesh chamber.

If the smoke alarm does not work when the test button is pushed, please check our Trouble Shooting Guides at;

cavius.co.nz and **cavius.com.au**

Disposal: For product, please dispose properly at end of life. The alarm can be recycled at an electronic waste recycling centre.

Other information:

- Do not paint the smoke alarm.
- Note the local country regulations regarding installation of mains powered smoke alarms in new buildings.

The CAVIUS smoke alarm is a photoelectric alarm designed to be installed into residential homes, camper-vans and caravans. It is not recommended for boats.



Certified to Australian Standard
AS3786:2014

Developed & Manufactured by:

CAVIUS Aps

Julsøvej 16 - DK8600 Silkeborg

cavius.com - info@cavius.com

Manufactured in P.R.C.

Distributor information:

for New Zealand - CAVIUS Nano Ltd.

58a Poplar Lane, Papamoa 3187, NZ.

www.cavius.co.nz

for Australia - CAVIUS Australia PTY Limited

PO BOX 6126, Yatala DC, QLD 4207, Australia.

www.cavius.com.au

Warranty:

CAVIUS provides a 10-year warranty against defect in faulty material and workmanship from the date of purchase, on all devices.

The warranty applies to reasonable and normal conditions of use only. It does not include damage as a result of misuse, incorrect installation, accidental damage, neglect, unauthorised deconstruction or dismantling and any airborne or other contamination however this may have occurred.

If this product has an acknowledged defect it must be returned to the national CAVIUS distributor at the purchasers cost with the proof of purchase.

If the product has become defective within the 10-year warranty, CAVIUS APS, Denmark will repair or replace the unit without charge and send back to the purchaser, via the national distributor at the distributors cost.

The guarantee excludes labour costs, freight costs, service costs and any incidental and consequential damages. Do not attempt to repair or service this product as this will invalidate the warranty.

Product overview:

Type of mounting	<input checked="" type="checkbox"/>	Ceiling and Wall Mounting
Main power supply	<input checked="" type="checkbox"/>	Internal power source (battery included)
Interconnectable device	Yes	No <input checked="" type="checkbox"/>
Suitable for installation in mobile home	Yes <input checked="" type="checkbox"/>	No
Connection to external auxiliary devices	Yes	No <input checked="" type="checkbox"/>
Alarm silence facility (10min)	Yes <input checked="" type="checkbox"/>	No

127479 rev2

CAVIUS

PHOTOELECTRIC SMOKE ALARM

THE WORLD'S SMALLEST



10 YEAR
BATTERY
INCLUDED
NON-REPLACEABLE

PLEASE READ THIS USER GUIDE CAREFULLY